



Gondwana Garden
 Wonthaggi, VIC, Australia

Status
 Masterplanning
Sector
 Public
Site area
 17,500 sqm

The Wonthaggi Gondwana Garden, a key node in the proposed Bass Coast Dinosaurs Trail, immerses visitors in the prehistoric landscapes of Gondwana, where polar dinosaurs roamed 125 million years ago. Through a blend of botanical expertise and cutting-edge audio-visual technology, the garden offers a captivating experience, blurring the lines of space and time. Aligned with Bass Coast Shire's cultural goals, it focuses on dinosaur significance, community connection, cultural heritage, environmental values, coal formation, and stimulating creativity. We have developed the design, integrating our disciplines of science, engineering, landscape and technology.

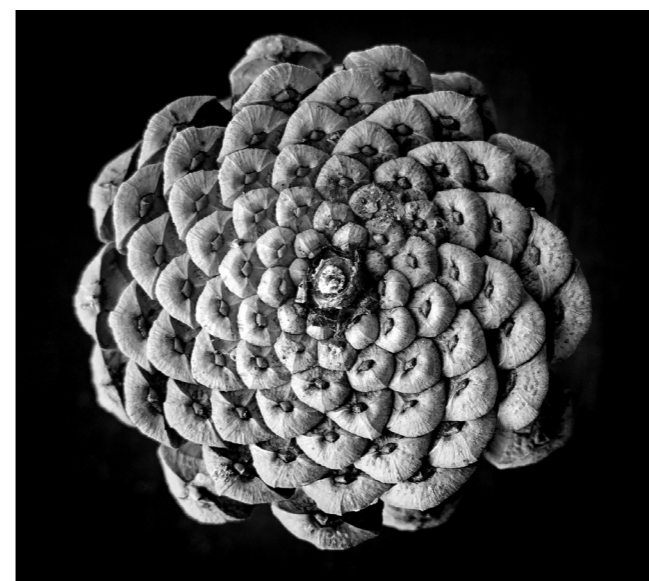
The garden serves as a tribute to Wonthaggi's cultural significance as a meeting ground for the Bunurong people, emphasizing reconciliation and storytelling. With a commitment to sustainable practices, the design considers Australia's fragile ecosystems, featuring a water-sensitive garden that conserves water resources and supports indigenous flora and fauna. A tech spine facilitates a digital experience, enhancing visitor engagement with interpretive displays, wayfinding, and virtual reality.

The garden rooms showcase plant evolution stages, from mosses to flowering plants, representing Gondwana's diverse species and the Bass Coast's unique flora. Gondwana Garden Rooms include Primordial Swamp, Primitive Garden, Fern Garden, Cycad Ginkgo Garden, Conifer Garden, Nectar Garden, Crater Space, and Point Zero Five Garden. It's not just a garden; it's a living testament to the past and a call to shape a regenerative future.

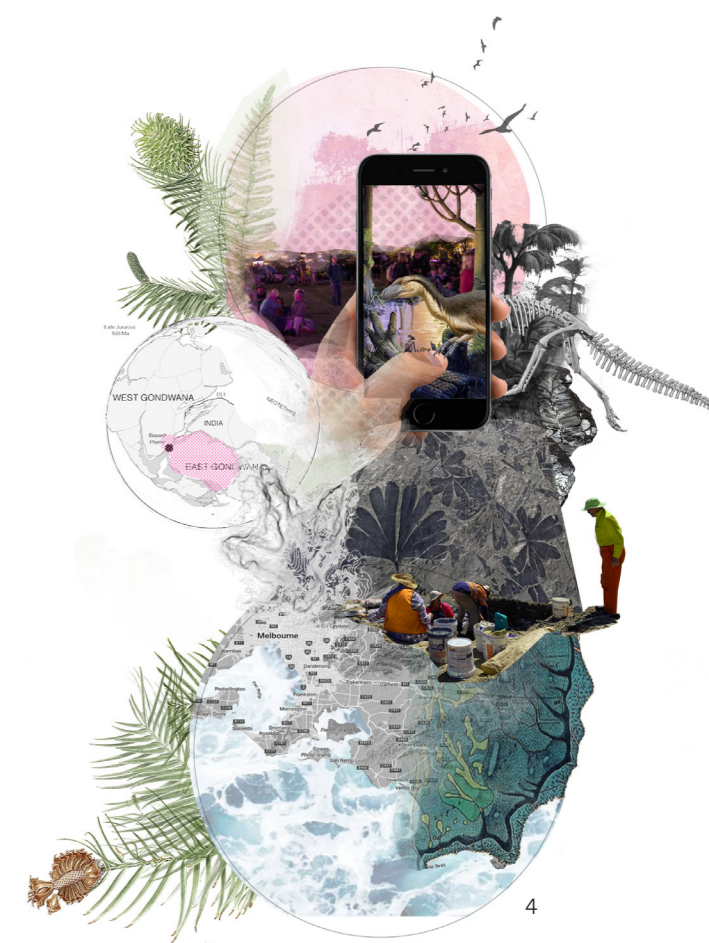
- Image Credits**
1. Concept Masterplan: CJ Arms
 2. Polar dinosaurs of Australia - Lida Xing
 3. Fibonacci: DE Wolf
 4. Concept Narrative: CJ Arms
 5. Concept Vision: CJ Arms



2



3



4



5